

SOF NO : 01D1031/05/001(49934)
 Project No.: 01D1031
 Winding : 0.27 - 85
 Motor test reference no : HC685G/BS/25046/5E0 (CCW)

Date : 05-11-29

Performance (In an ambient temperature of 25 -30 C)
 Motor tested rapidly to prevent significant temperature rise.

At a constant voltage of 12.00 Volts
 With a circuit resistance 0.000 Ohm

AT No Load

Speed : 4501 Rpm
 Current: 0.167 Amp

At stall (Extrapolated)

Torque : 88.669 m-Nm
 Current: 3.783 Amp

At maximum efficiency

Efficiency : 62.43 %
 Torque : 15.382 m-Nm
 Speed : 3720 Rpm
 Current: 0.794 Amp
 Output : 5.995 Watts

At maximum power

Torque : 44.335 m-Nm
 Speed : 2251 Rpm
 Current: 1.975 Amp
 Output : 10.453 Watts

Characteristics

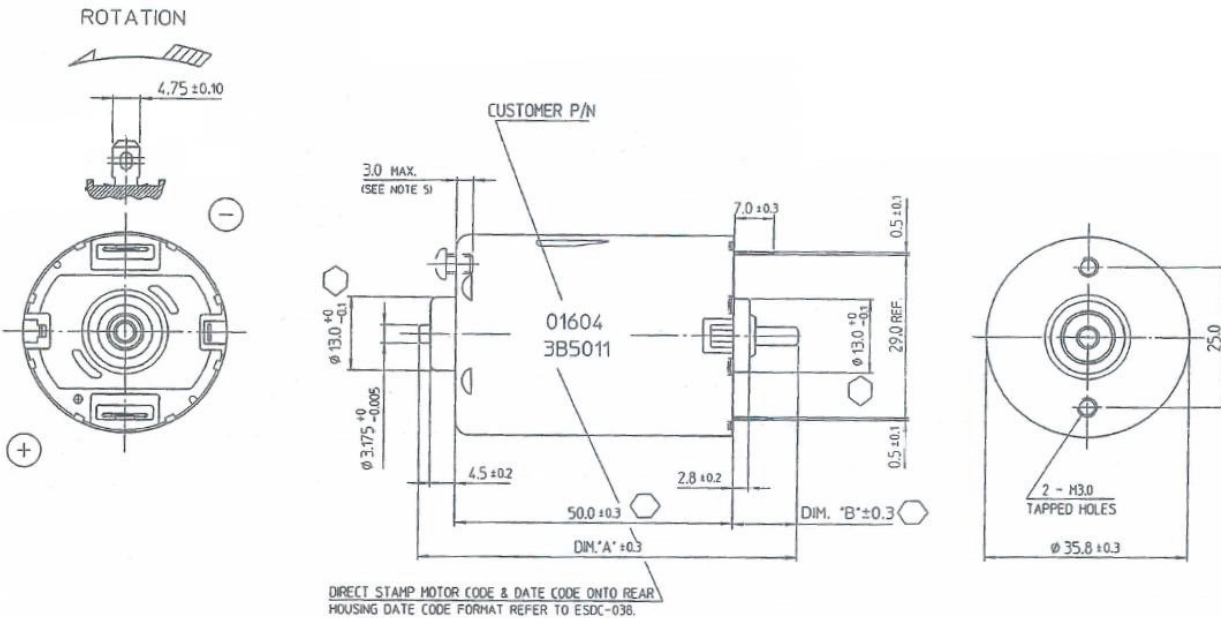
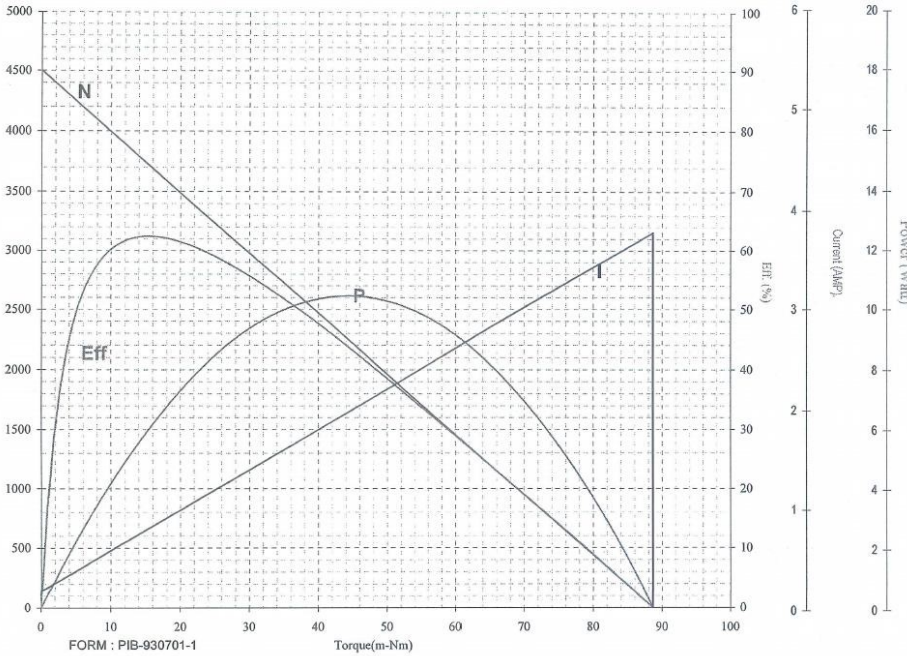
Torque Constant : 24.517 m-Nm/Amp
 E.M.F Constant : 24.517 mV/rad/sec
 Dy. Resistance : 3.318 Ohms
 Motor Regulation: 50.765 Rpm/m-Nm

Calculation

At Torque Level: 0.000 m-Nm

COMPUTER PRINT-OUT
 NOMINAL MOTOR CURVES.
 Performance and characteristics are
 measured based on limited motor
 samples only.

Issued by Motor Sampling



NOTES :

1. LENGTH OF SHAFT, DIM.'A' 68.0 mm.
2. FRONT EXTENSION, DIM.'B' 115 mm, MEASURED WITH SHAFT PUSHED AGAINST END CAP
3. DIRECTION OF ROTATION : ANTI-CLOCKWISE WHEN VIEWING MOTOR OUTPUT SHAFT END WITH POSITIVE VOLTAGE APPLIED TO POSITIVE TERMINAL.
4. END PLAY 0.50 mm. MAX.
5. TAPPED HOLES CAN ACCEPT MAX. MALE USABLE SCREW LENGTH OF 3.0 mm.
6. FOR THOSE DIMS. WITH SYMBOL , THE CAPABILITY SHOULD CONFORM TO Cpk ≥ 1.33.